

# JETE

**WARRANTY CARD and  
USER MANUAL**

**TWS TX2**



e-Usermanual

**IMPORTIR**

**PT. DORAN SUKSES INDONESIA**

Jl. Lebak Jaya 2 Tengah No. 2, Surabaya

**CUSTOMER SERVICE**

 **081217393609**

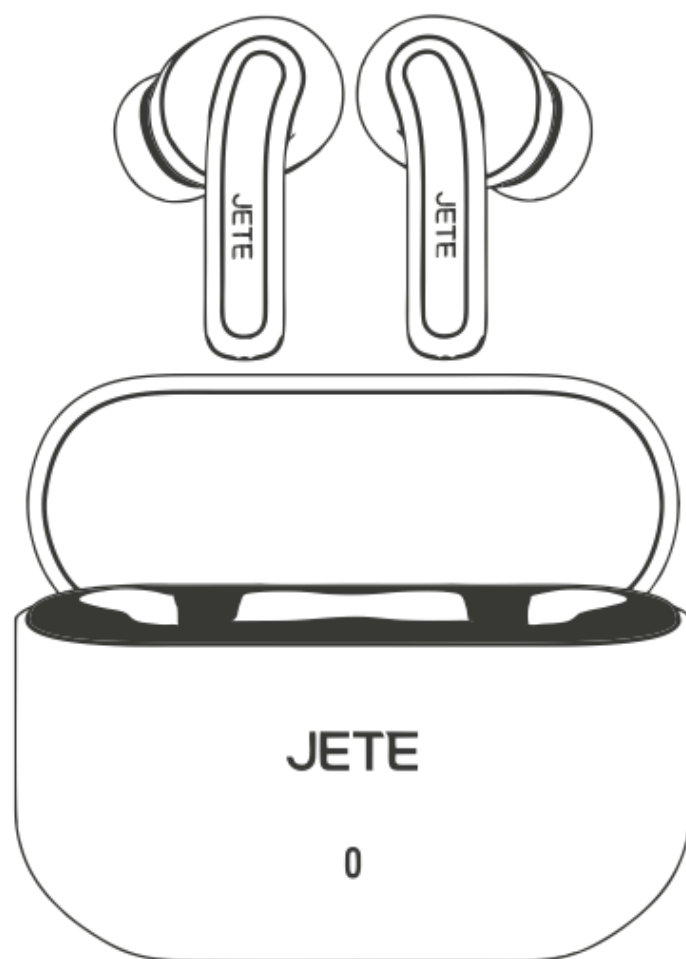
 [jete.id](http://jete.id)  [jeteindonesia](https://www.instagram.com/jeteindonesia)

 [jeteindonesia](https://www.facebook.com/jeteindonesia)  [jeteindonesia](https://www.twitter.com/jeteindonesia)

# JETE

## USER MANUAL

TWS TX2

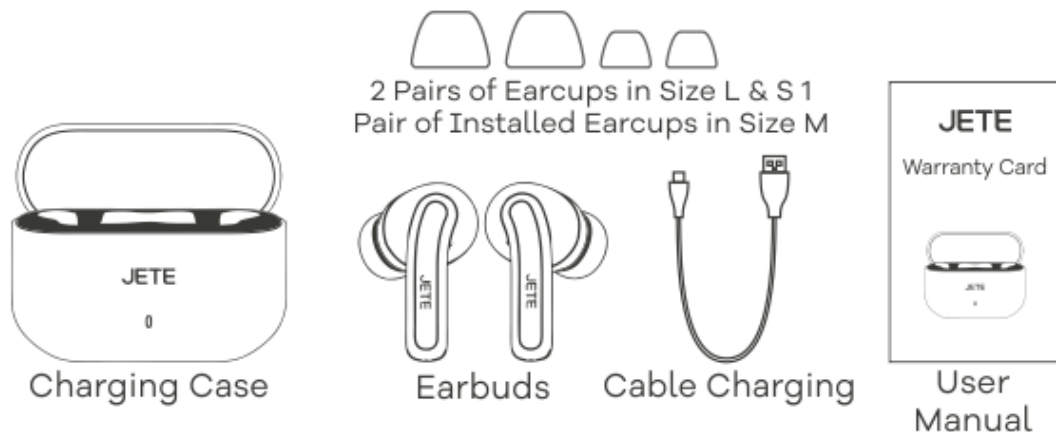


Please read the instructions carefully  
before using the product.

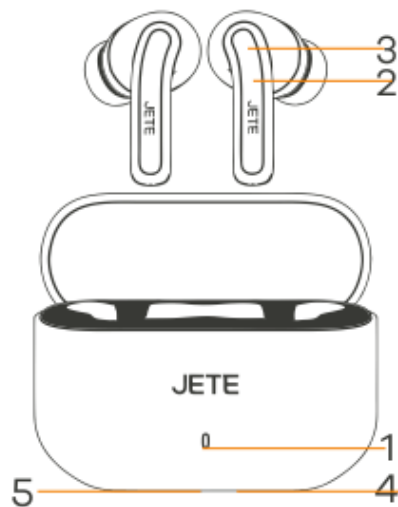
## Product Introduction :

Thank you for purchasing JETE products. For optimal and safe performance, it is expected to read the instructions carefully before using this product.

## Content Package :



## Description Structure Product :



1. LED Indicator Charging Case
2. MFB (Multifunction Button)
3. LED Indikator Earbud
4. Charging Port
5. Reset Button

**Tips :** Gently insert the earbuds into your ears and adjust the position to fit your ears.

### Attention:

Please open the plastic seals on both ends of the earbuds and do not forget the earbuds in the charger into the charging case for approximately 10 minutes for optimal use.



## How to connect devices with earbuds using the app :



App Store: JETE CONNECT

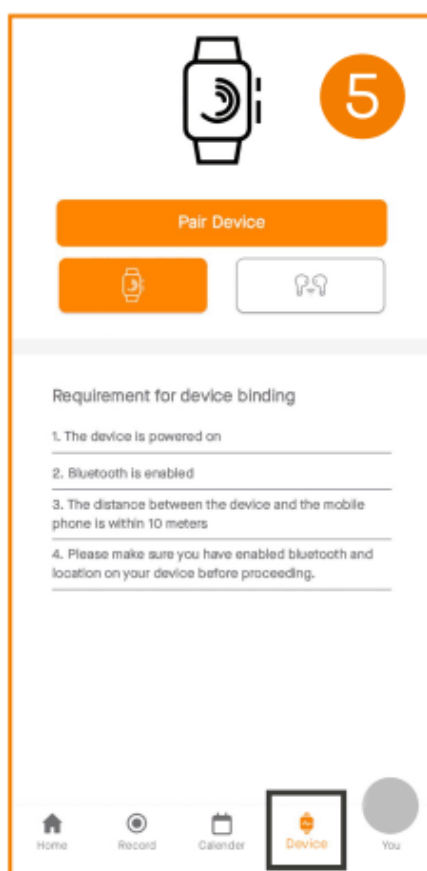
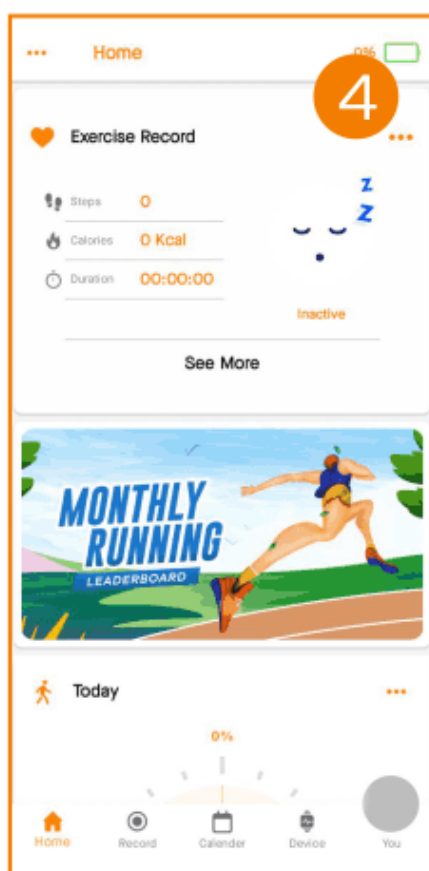


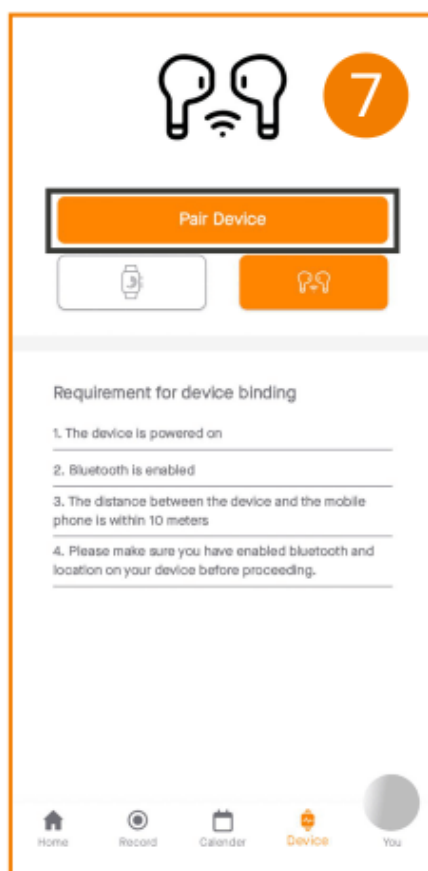
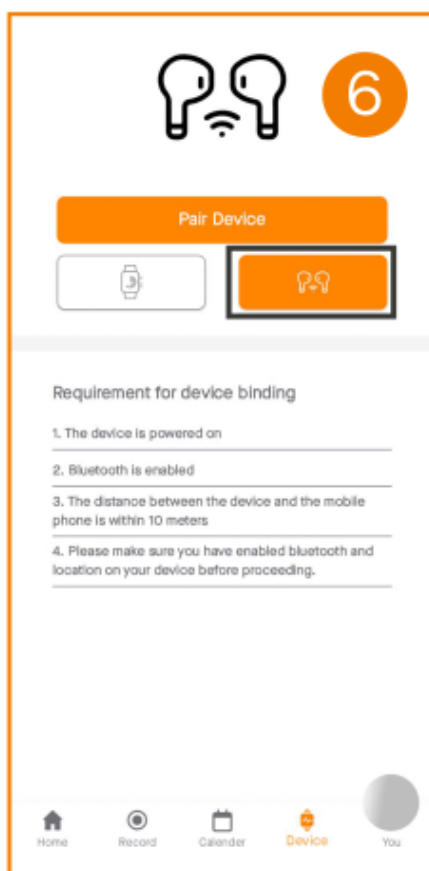
Google Play: JETE CONNECT

QR Aplikasi  
"JETE CONNECT"

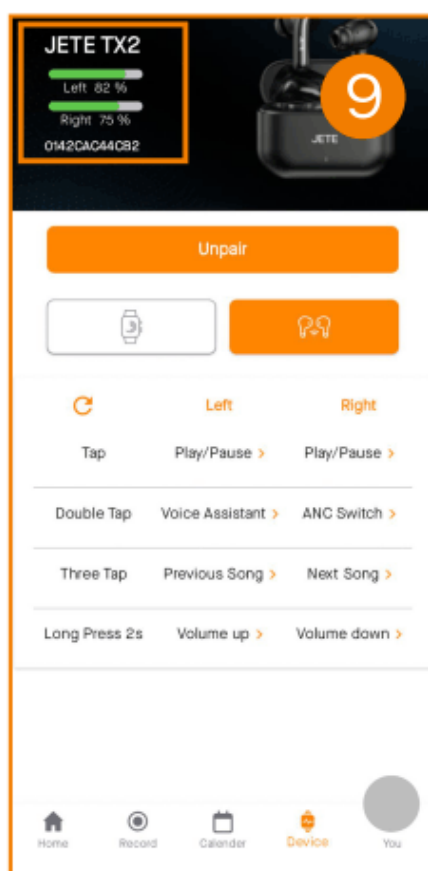
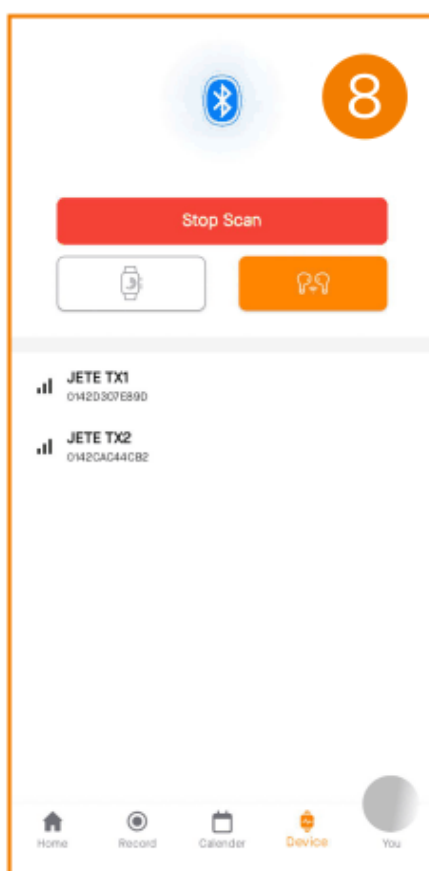


1. Connect the Device with TWS using bluetooth.
2. Download the JETE CONNECT application.
3. Open the app and register with JETE CONNECT.
4. After registration, the initial display will be as below.
5. Select the Device menu.

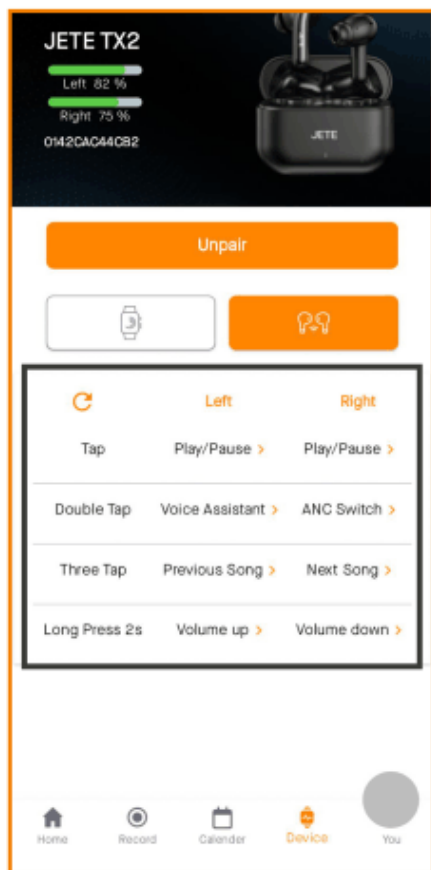




6. Select TWS device.
7. Click Pair Device.
8. Select the device used.
9. If it is connected perfectly, the earbud battery indicator will appear in the header above.



## How to change the MFB function on earbuds :



1. Perform pairing using the JETE CONNECT application.
2. Select the device menu or control panel on the Home menu.
3. Select Tap Left or Tap Right as desired.

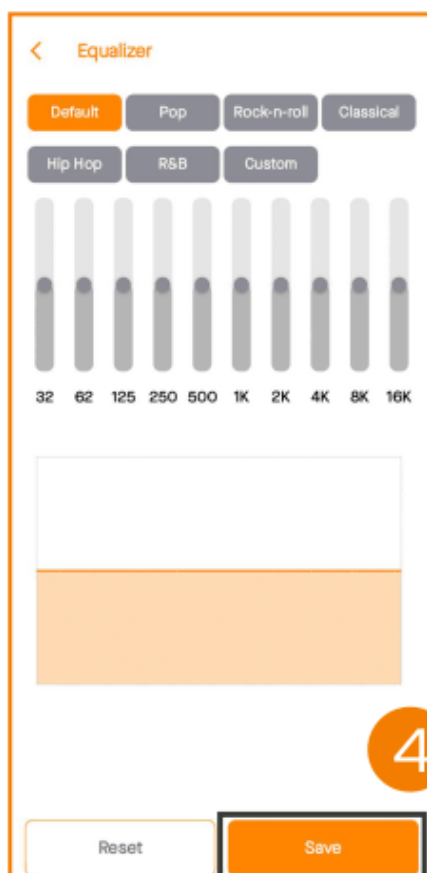
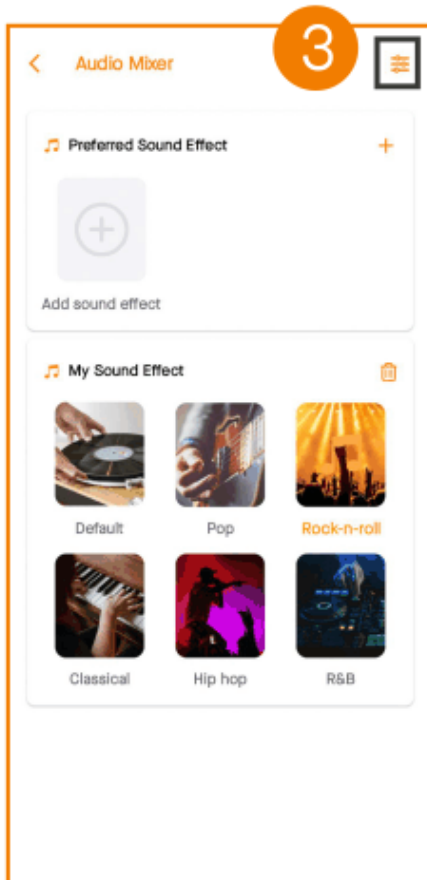
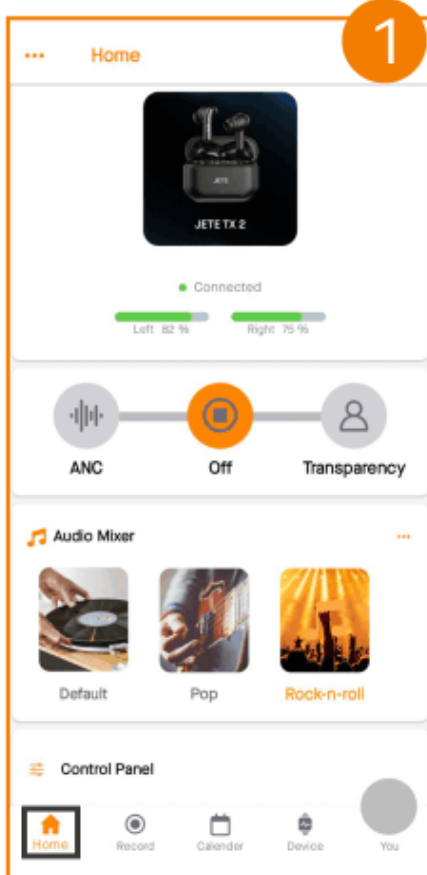
## How to change modes with the JETE CONNECT application :



1. Select the Home menu.
2. Select the desired mode (ANC, Off, Transparency).

## How to replace the audio mixer :

1. Select the Home menu.
2. Select the desired Audio Mixer.
3. Go to (☰) to custom equalizer manually.
4. Click save when finished.



### **How to Turn On the Earbud :**

- Take the earbuds out of the charging box to switch on
- If the earbuds are out of the charging box and turned off, press 5 seconds on the left and right earbuds to turn on the earbuds.

### **How to Turn Off the Earbud :**

- Put the Earbuds into the charging box and rotate the characters, so that the earbuds will not fall out.
- If the earbuds are out of the charging box and turned off, press 5 seconds on the left and right earbuds to turn on the earbuds.

### **How to Connect the Device with Earbud :**

1. Take the earbuds out of the charging box
2. The indicator will flash red and blue on one of the earbuds
3. Switch on bluetooth on the device
4. Then switch on search and select "JETE-TX2"
5. The earbuds are ready for use.
6. If within 180 seconds of the earbuds activating you do not pair with bluetooth on your device. the earbuds should be restarted.

### **Notes :**

- The earbuds store previously connected devices. when switched on again the earbuds will try to repeat the connection to the previous device.
- The earbuds will lose connection if the bluetooth distance exceeds the range limit. the earbuds will automatically reconnect when you come back into bluetooth range after 3 minutes.

### **How to Answer Incoming Call :**

Press 1 times at the MFB earbud on the right/left to answer or end a call.

### **How to Reject a Call :**

Press the 2 seconds at the earbud on the right/left to reject the call

### **How to Active Feature Voice Assistant :**

Press 2 times at the earbud on the right/left for active voice assistance

### **How to Play / Pause :**

Press 1 times at the earbud on the right/left to Play/pause music.

### **How to Play Music :**

- Next song : Press 3 times at the earbud on the right for play music next
- Previous song : Press 3 times at the earbud on the left for play music previous

### **How to Increase & Decrease Volume :**

- Press 2 seconds at the earbud on the left for increase volume
- Press 2 seconds at the earbud on the right for decrease volume

### **How to Switch Modes :**

Press 2 times on the right erbud to switch modes

- Take out one of the earbuds from the charging box and it will be connected to the previous device.
- Then play back and forth this mode can also be used to make phone calls.
- It is recommended that the earbuds work normally use them according to the TWS function

### **How to Factory Reset :**

- Open the charging box with the earbuds in the box, and Press 6 seconds at the charging box, until the indicator flashes green

## How to Charge :

### Charging Case

- Charge the box, the indicator will flash green while charging then the indicator will flash after charging

### Earbud

- Put the earbuds into the charging box to charge, the earbuds indicator will be red and the indicator will turn off when the earbuds battery is fully charged.

## Spesification :

Bluetooth	: V5.4
ANC Level	: -28dB
Hal Switch	: Yes
Wireless Range	: 10 m ( Without Obstacles )
Speaker Sensitivity	: 108dB±3dB
Input Voltage/Current	: DC 5V/400A
Speaker	: 10 mm x 2
Impedance	: 32 <sup>Ω</sup>
Speaker Frequency	: 20 Hz ~ 20 KHz
Playtime	: 4 Hour ( 80% Volume )
Talk Time	: ANC ON 4 Hour ANC OFF 5 Hour
Standby Time	: ANC ON 20 H   ANC OFF 25 H
Charging Time	: Earbud (0.8H), 10 Mins (2.5H),
Earbuds Battery	Charging Case (2H)
Capacity	: 35 mAh ( 2C Fast Charging )
Charging Case Battery	: 470 mAh
Capacity	
Earbud Weight	: 4.5 x 2 g
Charging Case Weight	: 36.1 g

## Maintenance :

Please read the following recommendations before using JETE

- Avoid exposing the device to water vapor or humid places. This can affect the internal circuit.
- Do not use cleaning solutions to clean the device.
- Do not expose the device to extreme heat or cold, as this can damage the device or change certain plastic parts.
- Avoid exposing the device to sharp objects, as this can cause scratches and damage.
- Do not disassemble or modify the device.
- Do not drop the device, as this can damage the circuitry.
- Always store the device at room temperature.

## How to Warranty Claim JETE Product :

1. All warranty claims can be made at the list of Authorized Outlets listed on the warranty card.
2. Buyers can come to an authorized Outlet or contact Customer Service +62812-1739-3609 if they want to exchange the product online.
3. All expedition shipping costs / product postage are borne by the buyer.
4. When claiming the warranty, the buyer is MANDATORY to show the completeness of the warranty:
  - A purchase receipt that clearly states the name of the outlet and the date of the transaction.
  - The product must still be within the specified warranty period.
  - Warranty card that has been filled out.
  - Box / Packing Product.
5. Please inform the constraints / product damage that occurs to our staff.
6. WARRANTY DOES NOT APPLY if USER DAMAGE is found, namely:
  - BROKEN, CRACKED, BURNED, DROPPED, MODIFIED BY YOURSELF, SUBMERGED IN WATER.
7. If there are problems during warranty claims or other questions, please contact Customer Service +62812-1739-3609

## Terms and Conditions of Warranty :

1. This warranty is valid for 2 years for original JETE products.
2. This warranty is valid for the warranty period stated on the product packaging since the date of sale.
3. During the warranty period, the user is exempt from any replacement costs that may occur.
4. The user must show the warranty card and purchase receipt when applying for a warranty.
5. The warranty applies to functional damage:
  - Disfunction.
  - Audio not detected.
  - Indicator off.
  - Battery damage.
6. This warranty DOES NOT APPLY if:
  - PRODUCT IS BROKEN, CRACKED, BURNED, FALLEN,
  - MODIFIED YOURSELF, SOAKED IN WATER.
  - Supporting accessories such as: cables, adapters, etc.
  - Abnormal use, not stored properly, natural disasters, modified, or anything intentionally.
  - The product has been repaired by a third party.
  - The data is not filled in completely by the seller and buyer.
  - Damage caused by user error.
  - The product warranty period has expired.

**2 YEARS  
WARRANTY**

**NEW REPLACEMENT  
FOR ANY FAULTS \*T&C**



Contact Us

**JETE WARRANTY POINTS**

